

The AUSblue logo features the brand name in a bold, white, sans-serif font, set against a blue background that is shaped like a stylized map of Australia. Below the map, the tagline "the Australian AdBlue® solution" is written in a smaller, white, sans-serif font.

AUSblue

the Australian AdBlue® solution

ADBLUE®, EQUIPMENT & PARTS CATALOGUE & PRICE BOOK 2020

Version Date 19/08/2020



Call our friendly team 1300 287 258
QLD | NSW | VIC | SA | WA | NT | TAS
Online order - www.ausblue.com.au
Email order - orders@ausblue.com.au



AUSblue

the Australian AdBlue® solution

AUSblue's primary operation in Australia, is manufacturing and distribution of AdBlue® under VDA licence in accordance with ISO 22241 standard, along with complementary add-on products. In addition to holding ISO 9001:2015 Quality Management System certification, AUSblue complies with Chain of Responsibility (CoR) legislation.

From its humble beginning of 2 employees in May 2010, it has grown to become the national company it is today. With actual blending facilities, staff presence and company-operated dedicated transportation, across the nation, the ability to service "high frequency, multi-site operations" is our speciality.

Manufacturing and distribution facilities are strategically located throughout Australia, in major towns or close to ports, allowing for ease of delivery to all parts of the country.

We currently supply AdBlue® to a broad spectrum of companies, large and small, including but not limited to government agencies, mining sector, transport companies, fuel majors (many with sites scattered nationwide), along with custom built tanks, dispensing solutions, and other complementary add-on products (e.g. Piusi AdBlue® equipment).

AUSblue is the first Australian AdBlue® company that has been granted an authorised reseller agreement with Piusi.

Our mission is to be the most sustainable and respected AdBlue® supplier, leading the Australian industry by setting new benchmarks in excellence for high quality AdBlue® products and solutions, accompanied with a trusted service.

AdBlue®
PAGES 1-3

Equipment
PAGES 4-34

Tanks
PAGES 35-40

Automotive
PAGES 41-52

Green Fuel Max
PAGES 53-55

Price Book
PAGES 58-60



AdBlue® is a registered trademark of the Verband der Automobilindustrie e.V. (VDA)



AdBlue®



AUSblue AdBlue® available in packaged and bulk solutions providing the answer to your AdBlue® needs.



10L Container with Spout



15L Container with Spout

Conveniently sized for easy filling on the road or at home.

10 Litre container available 75 units per pallet

15 Litre container available 48 units per pallet



AUSblue AdBlue® available in packaged and bulk solutions providing the answer to your AdBlue® needs.



210L Drum



1000L IBC

For the mid range user or small fleet owner

4 x 210L Units to a Pallet



AdBlue®

Equipment Solutions

Quality is pivotal to our business to ensure our customers can rely on our products to avoid any unnecessary downtime. By introducing Piusi products to our equipment line, we blend Italian, quality made accessories, with our superior, VDA certified AdBlue®.



Fluid Handling Innovation



ISO/VDA certified ensuring
the highest quality
AdBlue®
and Accessories



Australia wide supply
distribution
hubs



Full range of equipment,
pumps, nozzles, hoses,
meters & bunds

Self Service Management

PAGES 6-9

Bowers & Dispensers

PAGES 10-15

Pumps

PAGES 16-21

Nozzles

PAGES 22-25

Nozzle & Hose Accessories

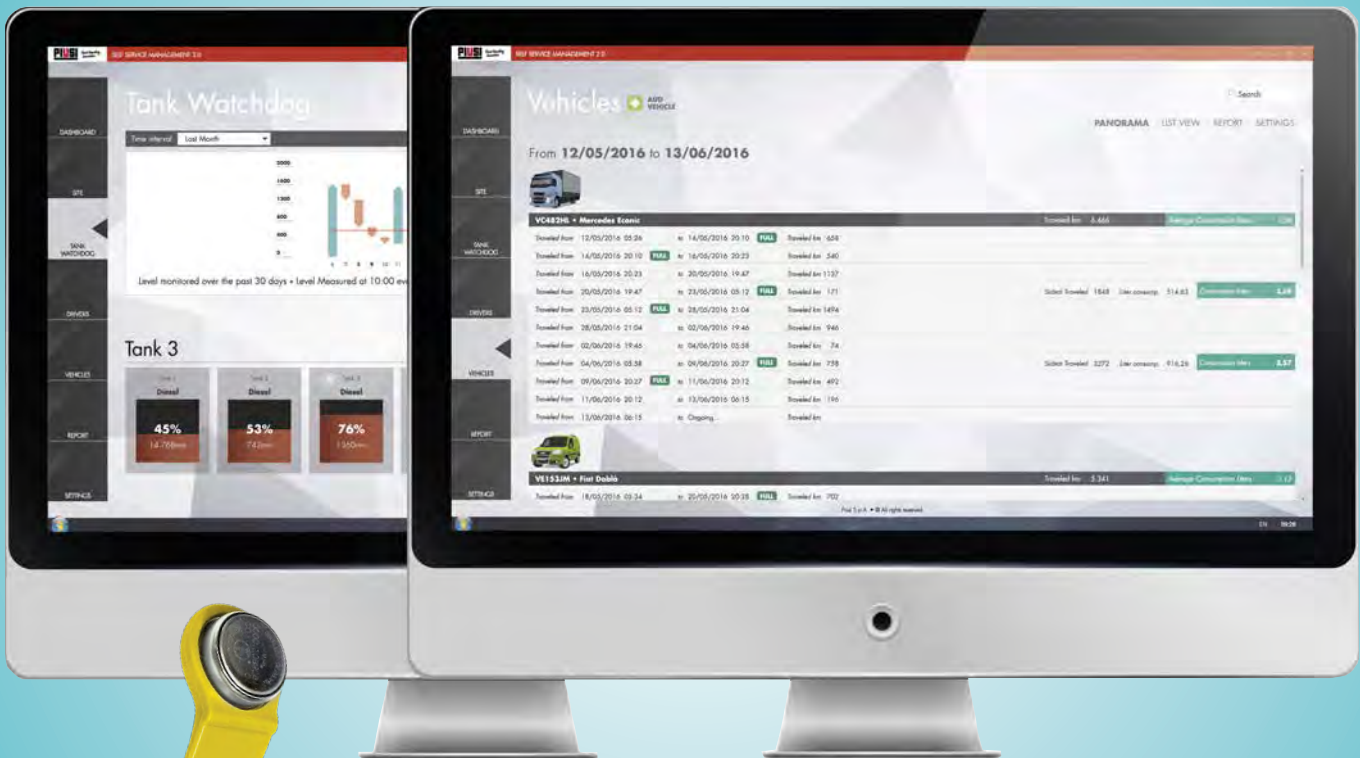
PAGES 26-27

Telemetry & Meters

PAGES 28-31

Filters & Accessories

PAGES 32-34



Integrated software to manage and monitor your driver, fleet and tank fluid in real time



Monitor tank levels with real time information



Set restrictions and guidelines for individual drivers and fleet



Generate reports for tanks, fluid, driver or vehicles



Limit fluid per vehicle or driver to help protect vehicles from incorrect fluid use



Available in LAN or optional Wifi connections



Comprehensive Easy Use Dashboard Display

Monitor and manage your company's fluid use conveniently and easily with the help of our Self Service Management software. With the ability to control driver and fleet fluid usage, while easily monitoring fluid levels, you will never be left short. An easy use PC dashboard generates multiple reports to quickly and efficiently keep track of your usage, and gives you the ability to make changes to fleet and driver access at the click of button.



MCBOX 2.0 is a management system to monitor users, vehicles and fuel dispensing for non-commercial diesel fuel and AdBlue® distribution plants. It is suitable to manage and control an existing pump, pulse meter and nozzle.

Two-way dialogue is possible with a PC via the standard LAN connection, which not only makes it able to receive data but also lets you change the configuration from a remote location, conveniently and accurately.

Self Service management 2.0 software is required.

Features

- Management of a Pulser flow meter
- Management of an external level switch to turn the pump off in low level conditions
- Management of microswitch connected to nozzle holder
- Access control
- Pump start
- Pre-selection
- External printer connection

Optional Equipment

- OCIO 2.0 level indicator for constant monitoring of tank levels.
- magnetic keys (yellow i-button) for user recognition
- magnetic keys (blue i-button) for vehicle recognition



PW MOBILE 4G enables two-way data transfer with a PC via 4G mobile network coverage.

This solution allows remote connection to Piusi 2.0 range of equipment devices from anywhere in the world..

The equipment is provided with a worldwide SIM card which makes the PW MOBILE 4G ready to use.

Self Service management 2.0 software is required.



Piusi Keys to suit your company's needs

- ABSSMSS - SS MC2.0 Standard Software
- ABKMK - Manager Key - Grey
- ABKDKY - Driver Key Kit - Yellow (10 pieces)
- ABKVKB - Vehicle Key Kit - Blue (10 pieces)
- ABKKRSS - Kit Key Reader



Inside dispenser basic cabinet

Heavy Duty Pump



Automatic Nozzle



K24 Meter



3D Filter Cartridge & Housing



Stainless Steel Base with Nozzle Holder



6m Delivery Hose



Heavy Duty Pump



1.5m Suction Hose



Automatic Stainless Steel Nozzle



3D Filter Cartridge & Housing

Technical Data

Code	Description	Voltage			Flow Rate		Meter	Nozzle	Hose	Switch
ABCDK	AUSblue Standard Dispenser Box	240V/50H	400W	1.95 Amp max	32 l/m	8,5 gpm	K24	Automatic	6m	On/Off



Heavy Duty Pump



Automatic Nozzle



K24 Meter



3D Filter Cartridge & Housing



Stainless Steel Base with Side Stow Nozzle Holder



Heavy Duty Pump



Automatic Stainless Steel Nozzle



6m Delivery Hose



1.5m Suction Hose



3D Filter Cartridge & Housing



Turbinox Meter (optional)

Technical Data

Code	Description	Voltage			Flow Rate		Meter	Nozzle	Hose	Switch
ABCDKSS	AUSblue Side Stow Dispenser Box	240V/50H	400W	1.95 Amp max	32 l/m	8,5 gpm	K24	Automatic	6m	On/Off



Heavy Duty Pump



Automatic Nozzle



K24 Meter



3D Filter Cartridge & Housing



Stainless Steel Base with Nozzle Holder



Heavy Duty Pump



Automatic Stainless Steel Nozzle



6m Delivery Hose



1.5m Suction Hose



3D Filter Cartridge & Housing

Technical Data

Code	Description	Voltage			Flow Rate		Meter	Nozzle	Hose	Switch
ABSDBD	Piusi Suzzarablue Dispenser Box	240V/50H	400W	1.95 Amp max	32 l/m	8,5 gpm	K24	Automatic	6m	On/Off



Designed for non-commercial sites, the MC 2.0 Dispenser makes management of your site easy.



Ability to connect system pump, electronic flow meter, a nozzle contact and an external printer



Equipped with Dual Display, Key pad and i-button key reader



Offers the facility to monitor tank level by OCIO 2.0



Standard LAN Connection



To be used with Self Service 2.0 Software



Suitable for non-commercial application

Technical Data

Code	Description	Voltage			Flow Rate		Meter	Nozzle	Filter	Hose	PC Connection
ABSSPMC	Self Service MC	230V/50H	400W	1.95 Amp max	34 l/min	9gpm	K24	SB325	3D Filter	6m	Yes



Suitable for Forecourt & Retail Applications



NMI Approvals for Retail Sites



Compatible with Compac Fuel Management Systems



Stainless Steel Components



Corrosive Resistant Piping & Seals



Stainless Steel Coriolis Mass Flow Meter

Technical Data

Code	Description	Height with Mast	Flow Rate	Nozzle	PC Connection
ABDCS	SINGLE HOSE DISPENSER	2064mm	30 l/min	ZVA Magnetic Nozzle	Compac Fuel Management System Compatible
ABDCD	DOUBLE HOSE DISPENSER	2064mm	30 l/min	ZVA Magnetic Nozzle	Compac Fuel Management System Compatible



Stainless Steel Base with Nozzle Holder



Heavy Duty Pump



Automatic Stainless Steel Nozzle



6m Delivery Hose



1.5m Suction Hose

Technical Data

Code	Description	Voltage			Flow Rate		Hose		Switch
ABDP210	Delphin Pro 210	230V/50H	400W	1.95 Amp max	3-11 l/m	0.8 - 3 gpm	2m	3/4" dia	On/Off
ABDP1000	Delphin Pro 1000	230V/50H	400W	1.95 Amp max	3-11 l/m	0.8 - 3 gpm	2m	3/4" dia	On/Off



PIUSI

Heavy Duty Pump



Manual Nozzle



Stainless Steel Base



Heavy Duty Pump



Manual Nozzle



6m Delivery Hose



1.5m Suction Hose

Technical Data

Code	Description	Voltage			Flow Rate		Meter	Nozzle	Suction	Hose	Switch
ABIBCB	IBC Basic Pump Kit	230V/50H	400W	1.95 Amp max	32 l/m	8,5 gpm	NO	Manual	SEC	6m	On/Off

PIUSI



Heavy Duty Pump



SB325 Nozzle



K24 Meter



Stainless Steel Base with Nozzle Holder



Heavy Duty Pump



Automatic Stainless Steel Nozzle



6m Delivery Hose



1.5m Suction Hose

Technical Data

Code	Description	Voltage			Flow Rate		Meter	Nozzle	Suction	Hose	Switch
ABIBCP	Suzzarablue IBC Pro Kit	230V/50H	400W	1.95 Amp max	32 l/m	8,5 gpm	K24	SB325	Side External	6m	On/Off
ABIBCP12V	Suzzarablue IBC Pro Kit	12V	260W	22 Amp max	35 l/m	9,2 gpm	K24	SB325	Side External	6m	On/Off

210L Pump Kit Pro (240V or 12V)

AUSblue

the Australian AdBlue® solution

PIUSI



Heavy Duty Pump



SB325 Nozzle



240V Plug



12V Clamps



OR



Stainless Steel Base with Nozzle Holder



6m Delivery Hose



240V or 12V Heavy Duty Pump



1.5m Suction Hose



Automatic SB325 Stainless Steel Nozzle



32 Litres per minute flow rate

Technical Data

Code	Description	Voltage			Flow Rate		Meter	Nozzle	Hose	Switch
ABTMP210	210L 240V Pump Kit Pro	230V/50H	400W	1.95 Amp max	32 l/m	8,5 gpm	NO	SB325	6m	On/Off
ABTMP21012V	210L 12V Pump Kit Pro	12V	260W	22 Amp max	35 l/m	9,2 gpm	NO	SB325	6m	On/Off



PIUSI



38L per 100 revolutions



All metal components Stainless Steel



Self Priming with immediate and easy dispensing



Sturdy Construction for professional use

Technical Data

Code	Description	Capacity per 100 Revs		Drum Connector	Suction Tube
ABPHP	Rotary Hand Pump	38L	10USG	56x4	YES

Diaphragm Pump 12V

AUSblue

the Australian AdBlue® solution



Clamps



On/Off Switch



up to
36 l/m
flow rate



Voltage 12 V



Hose Tail Connection 3/4"



Absence of Dynamic Seals



ON/OFF Switch



2m Cable with Clamps



Duty Cycle 20 min

Technical Data

Code	Description	Voltage				Flow Rate		Cables mod	In/Out BSP	Switch
ABP12v	Suzzarablu Pump 12v	12	2800rpm	260W	22 Amp max	36 l/m	9,2 gpm	YES	3/4"	On/Off

Diaphragm Pump 240V/50H

AUSblue

the Australian AdBlue® solution



PIUSI

AC Plug



On/Off Switch



up to
34 l/m
flow rate



Self Priming Capability



Absence of Dynamic Seals



Hose Tail Connection 3/4"



ON/OFF Switch



2m Cable with Socket



Duty cycle 20 min

Technical Data

Code	Description	Voltage				Flow Rate		Cables	Inlet Outlet BSP	On/Off Switch
ABP240v	SuzzaraBlue AC pump	240V/50H	400W	1.95 Amp max	1450rpm	34 l/m	9 gpm	YES	3/4"	YES



Economical Nozzle suitable for pumped and gravity fed applications



19mm Stainless Steel Spout



Manual Trigger Nozzle



Can be used on low pressure systems



Polypropylene Body with Viton Seals



Flow Rate up to 80l/min

Technical Data

Code	Description	Flow Rate		Pressure	Inlet	Swivel	Spout
ABMN	Manual Nozzle with Hose Tail	80 l/min	10,6 gpm	3,4 bar	3/4" BSP	NO	3/4" ext diam



Magnetic Sleeve (optional)



Technopolymer casing



Stainless steel spout



Flexible casing which protects against weathering and UV radiation



Breakaway System for Safety



Easy replaceable spout



Hose Tail & Clamps

Technical Data

Code	Description	Flow Rate		Magnetic Adaptor	Meter	Pressure	Inlet	Swivel	Spout
ABCANE	Generic Automatic Nozzle	35 l/m	9 gpm	YES	NO	3,5 bar	3/4"	YES	19mm ext diam
ABANSP	Automatic Plastic Nozzle						3/4"	NO	



Technopolymer casing



Stainless steel spout



Flexible casing which protects against weathering and UV radiation



Breakaway System for Safety



Easy replaceable spout



Hose Tail & Clamps

Technical Data

Code	Description	Flow Rate		Magnetic Adaptor	Meter	Pressure	Inlet	Swivel	Spout
ABANSB325	SB325 Automatic Nozzle	35 l/m	9 gpm	NO	NO	3,5 bar	3/4"	YES	19mm ext diam



Magnetic Sleeve (optional)



Automatic shutoff once tank is full



19mm Stainless Steel Spout



Flow Rate up to 40 l/min

Magnetic Sleeve
(optional)



Technical Data

Code	Description	Flow Rate		Pressure	Inlet	Swivel	Spout
ABANSS	Automatic Stainless Steel Nozzle with Swivel	40 l/min	21,1gpm	3,4 bar	3/4" BSP	YES	3/4" ext diam



Manual Nozzle



19mm Flex Tube



Manual Nozzle



Gravity Fed



3m x 3/4" ID Flex Hose



IBC Adaptor with 60x6 threads



ABMS - Magnetic Sleeve (Red)
ABMSR - Magnetic Sleeve (Black & Blue)
Used to activate magnet in nozzle for use with containers



ABPHSF19MM - 19mm Flexible Hose
To suit Gravity Feed Kit



ABPHRAW19 - 19mm Pump Hose
For AdBlue Dispensing
Used on Rotary Pump, AUSblue
Dispensers, 210 & IBC Dispensing Kits



ABPFBS25 - 25mm Suction Hose
ABPFBS38 - 38mm Suction Hose
ABPFBS5030 - 50mm Suction Hose
For AdBlue Tanks and IBC's

Everlink ATG is our range of automatic tank gauging products, communally known as auto-dips. Connects to Everlink's cloud based Everlink management software to enable easy tracking of tank levels.



- Available in two models. Mains powered surface mounting and solar powered direct tank top mounting.
- Multiple sensing technologies available to suit different environments and different fluids such as AdBlue®.
- Tank sensing probe depths available in 3, 10, 20 metres or custom.
- Updates on level change, and hourly providing live feedback of tank level.
- Standard lead acid battery in solar unit, safe and inexpensive to replace.
- 4G, 5G, CATM communication options provide optimum coverage reach.
- 316 stainless steel and UV resistant ABS construction.
- Supports dual tanks, halves the cost! Eg: Diesel and AdBlue®.
- Email and SMS alerts for overfill, delivery level and low level.
- Daily tank level email reports.
- Fuel supplier access to tank level data.



Continuous tank level monitoring for your AdBlue®.



Accuracy +/- 1%



Suitable for tanks up to 4m high



Measures static pressure generated by fluid height on flexible tube



Continuous Reading



Multiple Alarms



Readings in %, mm, or litres



PIUSI

Rotating Display



up to
100 l/m
flow rate

+/-
1%
accuracy



Can be installed inline or at end of delivery hose



Compact easy read display



Easily replaceable batteries



Display can be rotated in 4 positions



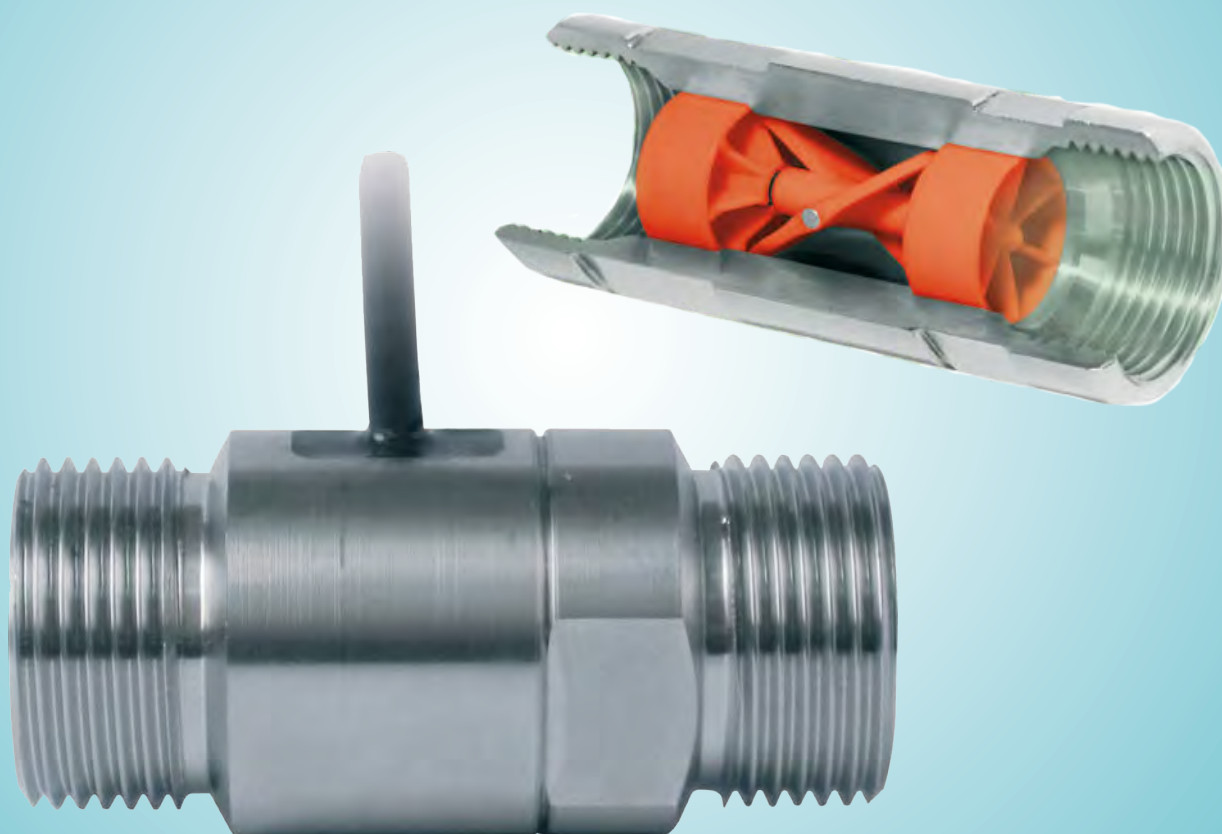
Electronic card with LCD Display



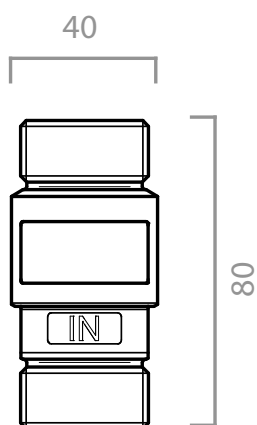
5 Digit Partial Total Display
6 Digit Total Display

Technical Data

Code	Description	Flow Rate		Pressure		Display
ABK24	K24 Meter (1 Socket)	5-120 l/min	1,3 - 26,4 gpm	10 bar	145 psi	YES



Dimensions



The Piusi TURBINOX is a turbine pulse meter suitable for transferring AdBlue®.



Its tight stainless steel body guarantees a long-life for use in every condition and makes this meter perfect for plant installations.



This meter is easy to install.

Technical Data

Code	Description	Flow Rate		Pressure		Display	Pulse out (p/l)
ABPTILM	Turbinox Inline Turbine Pulse meter	10-40 L/min	2,6 - 10,6 gpm	20 bar	290 psi	NO	Pulse Version 88



PIUSI

Operating
Pressure
12 bar

High
Capacity

Specially designed for AdBlue, the 3D high capacity filter helps remove impurities during filling and transferring of fluid. An added level of protection for your expensive machinery.

AB3DFH - 3D Filter Cartridge & Housing

AB3DFC - 3D Filter Cartridge

Automatic Hose Reel 8m

AUSblue

the Australian AdBlue® solution

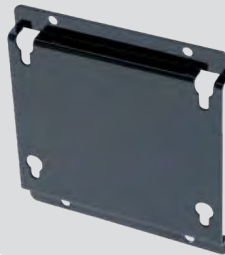
PIUSI



Hand Protection



Wall Fixture



8m Hose



AdBlue hose reel with EPDM (8m - 3/4") hose with swivel and elbow



Reduced Pressure Loss



Latch Mechanism Protector



8m Hose (15m hose option also available)



Adjustable Arms



Roof, Wall or Ground Installation

Technical Data

Code	Description	Hose	Max Operating Pressure	Pressure Drop	Inlet with hosetail	Outlet	Hose Length
ABHR8	Automatic Hose Reel with 8m Hose	3/4" BSP	10 bar	0,4 @ 35 l/min	3/4" BSP	3/4" BSP	8m

ABHR8- HOSE REEL WITH 8M HOSE



UV Stabilised to protect product



Durable Vinyl with Velcro sides



Clear Sight Strip

TANK

AdBlue Storage Solutions

Industrial strength tanks made to suit AdBlue®
and the Australian Climate

At AUSblue we are the market leader in bulk AdBlue® supply and tank infrastructure. Our AdBlue tanks are made from industrial materials specifically for use with AdBlue and made to withstand the harsh Australian climate. Our extensive experience and knowledge combine to build tanks and source products that help ensure optimum storage conditions to maintain your premium AdBlue quality.



Built to withstand the Australian climate, ensuring your AdBlue® quality is never compromised.

Tank details

- Storage: AdBlue®
- Capacity: 5,000 Litre
- Dimensions: 1920mm high x 2900mm long x 1170mm wide
- Specific Gravity (SG) rating: 1.2
- Build: Heavy duty industrial single skin plastic
- Inclusions: Sight glass level gauge

Optional configurations

- Secure lockable pump & nozzle stow
- 240v Diaphragm Pump (30 litres per minute)
- Automatic shut-off nozzle
- 1.5 metre suction hose
- Electronic remote telemetry
- Piusi K24 meter

Requirements

- 240 volt power required onsite for pump connection
- Flat level site for tank placement required



Built to withstand the Australian climate, ensuring your AdBlue® quality is never compromised.

Tank details

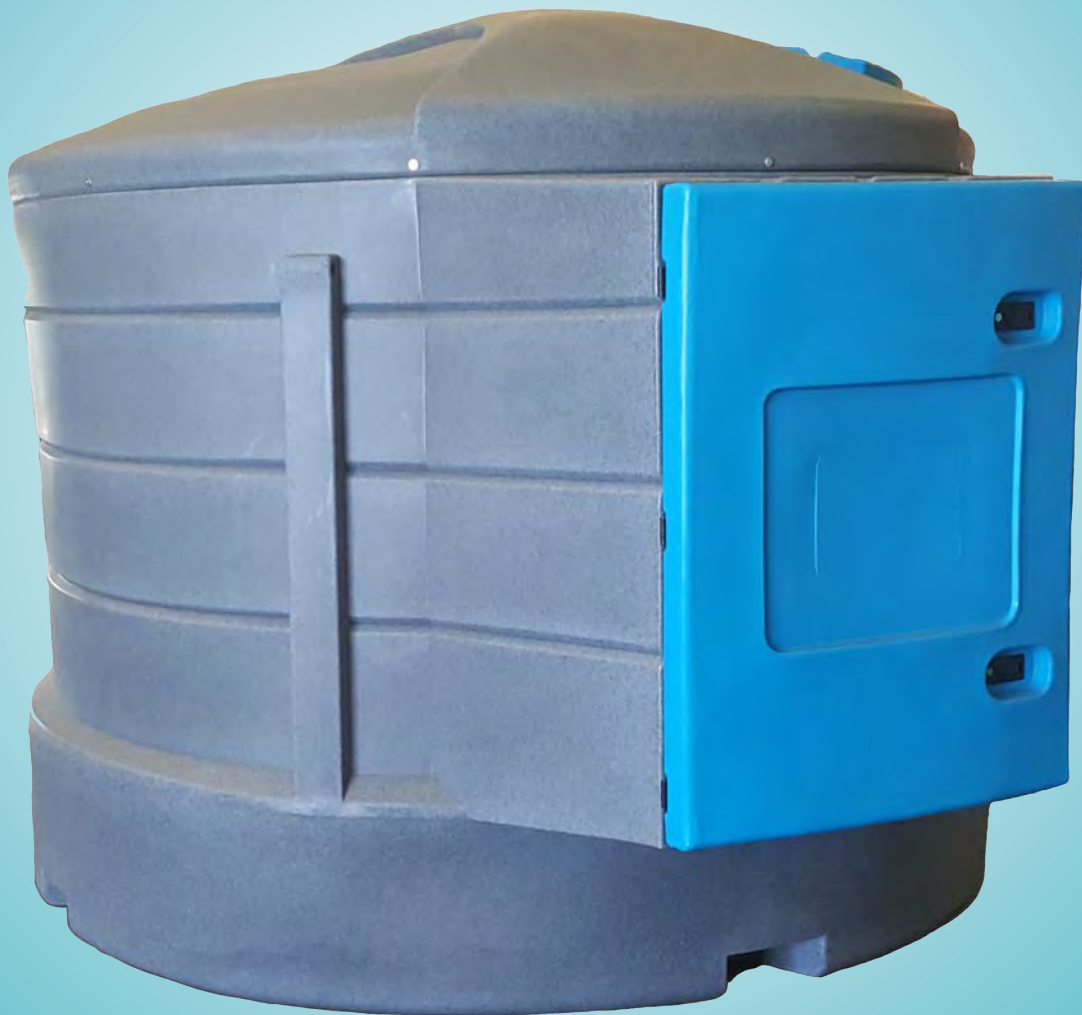
- Storage: AdBlue®
- Capacity: 10,000 Litre
- Dimensions: 2170mm high x 2560mm diameter
- Specific Gravity (SG) rating: 1.2
- Build: Heavy duty industrial single skin plastic
- Inclusions: Sight glass level gauge

Optional configurations

- Secure lockable pump & nozzle stow
- 240v Diaphragm Pump (30 litres per minute)
- Automatic shut-off nozzle
- Dispensing cabinet
- 4.0 meter delivery hose
- Electronic remote telemetry
- Piusi K24 meter

Requirements

- 240 volt power required onsite for pump connection
- Flat level site for tank placement required



Built to withstand the Australian climate, ensuring your AdBlue® quality is never compromised.

Tank details

- Storage: AdBlue®
- Capacity: 5,000 Litre
- Dimensions: 2030mm high x 2950mm long x 2380mm wide
- Specific Gravity (SG) rating: 1.2
- Build: Heavy duty industrial single skin plastic
- Inclusions: Secure dispensing cabinet

Optional configurations

- Secure lockable pump & nozzle stow
- 240v Diaphragm Pump (30 litres per minute)
- Automatic shut-off nozzle
- 6.0 metre delivery hose
- Electronic remote telemetry
- Piusi K24 meter
- OCIO electronic level gauge

Requirements

- 240 volt power required onsite for pump connection
- Flat level site for tank placement required



*Picture Shown with Nozzle Stow Option (Not Standard)

Tank details

- Storage: AdBlue®
- Capacity & dimensions:
 - 5,000 L - 2,650 H x 3,650 L x 1,290 W
 - 7,500 L - 2,650 H x 3,000 L x 2,420 W
 - 10,000 L - 2,650 H x 5,000 L x 2,150 W
 - 15,000 L - 2,650 H x 5,350 L x 2,350 W
 - 20,000 L - 2,650 H x 6,200 L x 2,700 W
- Build: Bunded tank build upon heavy duty skid base, for easy relocation
Compatible with POS connections and retail dispensers
- Inclusions: Lock up tank access room, housing the pump bay and fill point
Plug & play system. Pre-wired for connection on site

Optional configurations

- OCIO electronic level gauge (minimum requirement)
- 240v Diaphragm Pump (30 litres per minute)
- Automatic shut-off nozzle & nozzle stow
- Delivery hose
- Electronic remote telemetry
- Piusi K24 meter
- Turbinox Meter
- Submersible pressure pump

Requirements

- 240 volt power required onsite for pump connection
- Flat level site for tank placement required



*Picture Shown with Nozzle Stow Option (Not Standard)

Tank details

- Storage: AdBlue®
- Capacity & dimensions: 15,000 L - 2,600 H x 6,000 L x 2,420 W
- Build: Bunded tank build into heavy duty shipping container, for easy relocation
Compatible with POS connections and retail dispensers
- Inclusions: Lock up tank access room, housing the pump bay and fill point
Plug & play system. Pre-wired for connection on site

Optional configurations

- OCIO electronic level gauge (minimum requirement)
- 240v Diaphragm Pump (30 litres per minute)
- Automatic shut-off nozzle & nozzle stow
- Delivery hose
- Electronic remote telemetry
- Piusi K24 meter
- Turbinox Meter
- Submersible pressure pump

Requirements

- 240 volt power required onsite for pump connection
- Flat level site for tank placement required



AUSblue

Automotive Solutions



AC40 truck wash is a concentrated water based high performance and non-caustic truck wash. This product effectively removes road grime and dirt from all surfaces including plastic, rubber, chrome, aluminium and paintwork.

AC40 truck wash is bio-degradable and free rinsing. It is suitable for gurney's and automated washing systems. This product was specifically developed not to streak and is suitable for use on side curtains of trailers and all fabrics found in the transport and marine environments.

AC40 is primarily used to wash trucks, trailers, cars, boats, coaches and mining equipment. It has also proves very effective as a floor cleaner and laundry cleaner (especially on greasy clothing).

This product contains corrosion inhibitors to protect surface from rusting and does not contain caustic chemicals. It leaves paintwork shiny and streak free when used as directed.

This product is economical to use and can be used across a broad range of dilution to control performance and cost.

Available in 20, 210 & 1000 Litre



AC41 Vehicle Wash is a versatile concentrated water based high performance cleaner with carnauba wax. The high quality carnauba wax emulsions is imported from Europe and does not contain silicone.

This product effectively removes road grime and dirt from all surfaces including plastic, rubber, chrome, aluminium and paintwork. It leaves vehicles streak free without water marks and noticeably shinier afterwards. This product is economical to use and can be used across a broad range of dilutions to control performance and cost.

General Guide

Light Cleaning (General Washing) 1:50

Medium Cleaning (Dirt and Grime) 1:25

Heavy Cleaning (Built up Dirt and stubborn road grime) 1:5

Application Guide

Spray onto surface using foaming gun, pump spray pack or dilute in a bucket.

Allow time for detergent to penetrate before hosing off.

Available in 20 & 200 Litre



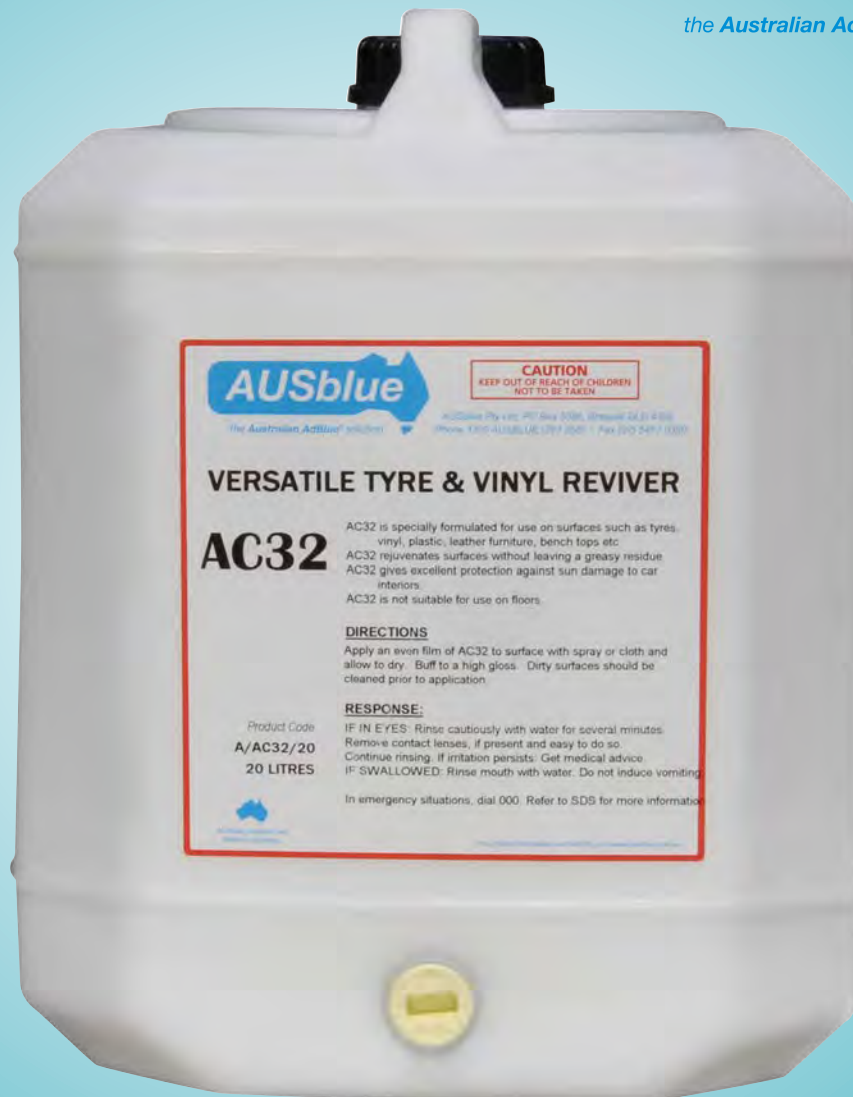
AC27 is a highly effective, solvent based liquid that has been specifically designed for cleaning brake and clutch parts. It has been laboratory formulated from fast drying solvents that evaporate quickly leaving parts ready for immediate re-assembly.

AC27 is non residual ensuring that further cleaning is not required.

AC27 has no deleterious effects on rubber used in brake systems (unlike many other more crude solvents) and has been lab tested to meet strict standards of performance. This product is used in a variety of other critical industrial applications such as aviation and defence.

AC27 is suitable for drum and disk brakes. Best results are achieved using spray applicators. 1L pump-up sprays manufactured in Germany are recommended for this application. The product is highly flammable and should be used with care. It is important that the Product SDS is referred to prior to using.

Available in 20 & 205 Litre



AC32 is a silicone emulsion based product specially designed for internal vinyl protection.

AC32 efficiently rejuvenates vinyl and rubber surfaces while protecting from sun damage.

AC32 is often compared with other surface cleaners and treatments for automotive use and consistently is favoured due the lack of greasy finish, excellent cleaning properties and pleasant organic lime fragrance.

Applications

Perfect for all interior surfaces including seats, dash, trim as well as external bumpers and trims.

Benefits

AC32 is very economical and easily applied by atomizing spray.

AC32 does not stay greasy when dried.

Available in 20 Litre



AC43 is a highly concentrated formula of emulsifiers, wetting agents and surfactants for the removal of oil and dirt from all material types. It is fully bio degradable and quick breaking.

AC43 has a high flash point making it suitable for parts washers and in areas where flammable liquids cannot be used.

The benefits of AC43 are that it will not damage rubber, plastic, automotive paintwork or metals when used as recommended. Additionally, it inhibits ferrous metal corrosion.

AC43 contains no harsh chemicals such as petroleum solvents, kerosene, aromatics, phenols and chlorinated hydrocarbon or other chlorinated solvents.

Available in 20, 210 and 1,000 Litre



AC47 is a premium quality water based hand cleaner. Widely regarded as being the best available for removing dirt, grease and grime due to its innovative formula including organic ingredients from the USA and Europe.

AC47 contains polymer beads for deep cleansing of the skin and skin conditioning ingredients (including lanolin) to prevent drying and cracking of skin. Our specialised formulation also includes unique imported advanced surfactant soaps and non petrochemical solvent. This product contains no petroleum solvents (which promote drying and harsh removal of the skins natural oils).

AC47 has a neutral pH and a citrus fragrance that leaves hands refreshed.

This product can be used in a variety of industries where heavy duty cleaning is required such as automotive, manufacturing, mining and printing.

Available in 4x 5 Litre and 20 Litre



AC46 is a concentrated glass cleaner that has been formulated for addition to vehicle windscreen cleaner reservoirs. The unique blend of surfactants will quickly and effectively remove grease, dirt and bugs from windscreens.

AC46 is also ideal as a glass cleaner when diluted with good quality or demineralised water.

AC46 contains evaporative chemicals to enable quick drying and eliminate streaking. It is dyed brilliant blue with a high quality and fully UV / pH stable dye. It will not damage paintwork and is economical and safe to use

Available in 20 Litre



AC9 is a premium quality, organic, long life anti boil/anti freeze coolant concentrate. AC9 is based on carboxylate technology and contains no silicates, borates, phosphates, nitrites, nitrates or amines. AC9 is suitable for both automotive and heavy duty diesel engines.

AC9 contains 90% monoethylene glycol and a double inhibitor package ensuring ultimate corrosion protection and extended service life. Anti boil and anti freeze protection is equally afforded with a substantially higher rust and corrosion protection than competitor products. AC9 is the ultimate in up to date coolant technology. AC9 protects all metals found in cooling systems and gives excellent protection against cavitation's erosion and wet-sleeve liner pitting. It significantly increases the operating life of water pumps and exceeds corrosion performance levels required to meet Australian Standard AS2108.1-2004 and numerous performance specifications of OEM's including Ford & GMH. This coolant has been independently verified to all relevant ASTM's for automotive and heavy duty diesel use.

Provides maximum protection against 'hot spot' corrosion, common in aluminium cylinder heads. AC9 has a service life of up to 5 years / 500,000kms* in automotive applications and up to 6 years / 600,000kms / 6,000hrs* in heavy duty diesels. This has obvious environmental advantages as a result of fewer coolant changes. There are no deleterious effects on hoses or gaskets. (* at 50/50 dilution ratio) Has a proven record over many years with marine engines, mining equipment, taxi fleets, government departments, bus companies and several large fleet truck companies.

Available in 20, 210 and 1,000 Litre



ITEM NOT IN STOCK. POA.

AC9 is a premium quality, organic, long life anti boil/anti freeze coolant concentrate. AC9 is based on carboxylate technology and contains no silicates, borates, phosphates, nitrites, nitrates or amines. AC9 is suitable for both automotive and heavy duty diesel engines.

AC9 contains 90% monoethylene glycol and a double inhibitor package ensuring ultimate corrosion protection and extended service life. Anti boil and anti freeze protection is equally afforded with a substantially higher rust and corrosion protection than competitor products. AC9 is the ultimate in up to date coolant technology.

AC9 protects all metals found in cooling systems and gives excellent protection against cavitation's erosion and wet-sleeve liner pitting. It significantly increases the operating life of water pumps and exceeds corrosion performance levels required to meet Australian Standard AS2108.1-2004 and numerous performance specifications of OEM's including Ford & GMH. This coolant has been independently verified to all relevant ASTM's for automotive and heavy duty diesel use.

Provides maximum protection against 'hot spot' corrosion, common in aluminium cylinder heads.

AC9 has a service life of up to 5 years / 500,000kms* in automotive applications and up to 6 years / 600,000kms / 6,000hrs* in heavy duty diesels. This has obvious environmental advantages as a result of fewer coolant changes.

There are no deleterious effects on hoses or gaskets. (* at 50/50 dilution ratio)

Has a proven record over many years with marine engines, mining equipment, taxi fleets, government departments, bus companies and several large fleet truck companies.

Available in 20, 210 and 1,000 Litre



AC42 is ideal as a general purpose water rinsable solvent degreaser for cutting through tough to remove grease and grime. The professionally formulated blend of high aromatic solvents and effective surfactant soaps makes using this product ideal across a wide range of tasks.

AC42 emulsifies well and breaks at a high rate.

The benefits of AC42 has seen its use spread to a broad range of industries including oil and gas, automotive, truck, government and industrial users.

This product is ready to use and application should be by brush or spray. Allow 1-2 minutes for the product to penetrate and begin to lift the grease and grime. The removal with high pressure water spray gun gives excellent results.

Available in 20 & 200Litre



AB1LPUMP - 1 Litre Spray Pump

ABPUMPA - Pump for 5 Litre Containers

ABPUMPB - Pump for 20 Litre Containers

ABPACTAP - Black Plastic Tap for use on 20L Container

The perfect equipment to use with your Automotive Products, AUSblue now stock pumps, taps and sprayers.

- High Quality Plastics
- Solvent Resistant Sprayer



AUSblue AdBlue® available in packaged and bulk solutions providing the answer to your AdBlue® needs.

With a proven history in manufacturing and distributing a quality, reliable product, you can be sure that you are putting your business requirements in the hands of professionals.

Speak to one of our dedicated AdBlue® Professionals now to see how we can help take the hassle out of your AdBlue®.

VDA CERTIFIED ADBLUE BY AUSBLUE

AUSblue is the largest manufacturer of AdBlue® in Australia

AUSblue is VDA Certified to ISO 22241 by a NATA certified Laboratory

AUSblue track every batch produced

100% Pass VDA recertification audit January 2016

Quality guaranteed

Technical support

Tanks manufactured in house to AdBlue® specification

BULK ADBLUE® DELIVERY AUSTRALIA WIDE

